

Image Stitching Application

Application description

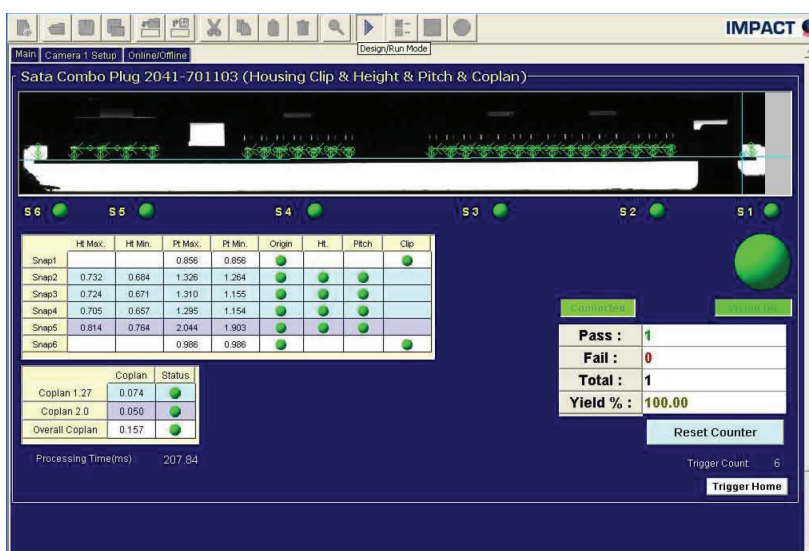
This application provides a low cost solution to inspect an electronic connector with high precision. The camera FOV covers approximately 1/6 of the length of the connector. During the inspection process, the connector moves to multiple indexes in the X direction so the camera can take different images to cover the entire part.

Using the Multiple Image Stitch tool in IMPACT VPM, a larger image is constructed based on certain overlapping features. A datum is then established using the entire connector so measurements can be made accurately.

Camera Setup Panel



Provides Full View of Connector Assembly using the IMPACT Multi Image Stitch tool



APPLICATION HIGHLIGHTS

- Measures pin/terminal height, pitch and coplanarity
- Accommodates up to 6 images per connector assembly
- Establishes a datum line using both ends of the connector assembly Eliminating the need to fabricate a physical datum object that is visible in each camera view, hence reduce production cost
- Sophisticated CPM program allows users to setup a new part directly from the control panel
- Built-in image saving and loading capabilities makes setup and testing simple
- Multiple panels showing single snap as well as full view of the connector after all images a stitched together